

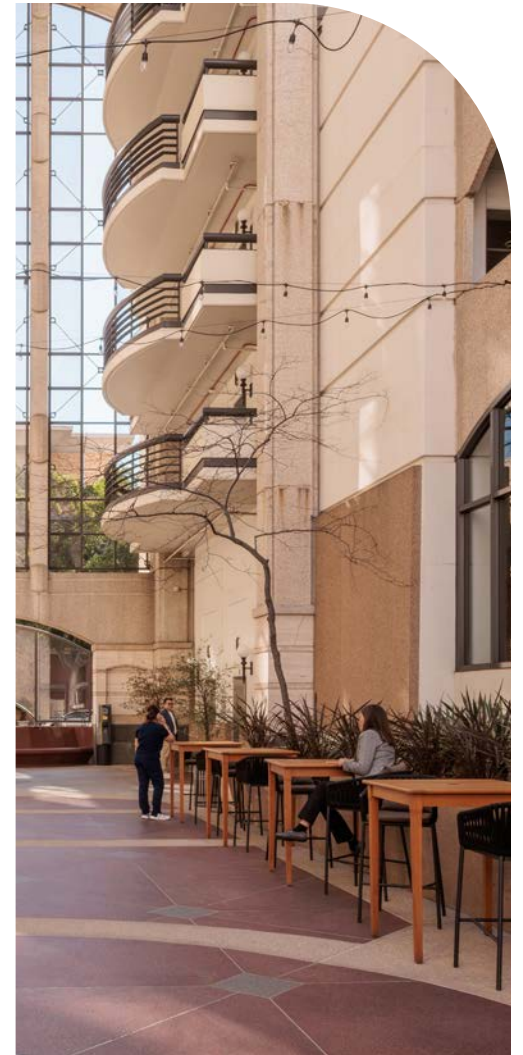
[www.pasadena-towers.com](http://www.pasadena-towers.com)



# A Space That Connects

## FOR LEASE

800 E. Colorado Blvd.  
& 55 S. Lake Ave.  
Pasadena, CA



**CBRE**

# Welcome to Pasadena Towers

where thoughtfully designed spaces create an environment that feels inspiring yet comfortable. This is where people connect, build meaningful relationships, and enjoy the moments that make each workday feel memorable.

## What We Do Differently



**We value culture**—both as a crucial element of the workplace, and as a part of what makes Pasadena such a special place to work.



Each artistic element, architectural detail, and finish honors Pasadena in **one exceptional setting**.



**We are committed to environmental efficiency**—earning us LEED® Gold certification—with our efficient HVAC systems for maximum circulation.



Above all else, **we provide extraordinary workplace experiences** with tenant well-being as our top priority.

# Standout Specifications

## WORKPLACE FLEXIBILITY

Expansive 26,500-square-foot rectangular floor plates offer optimal flexibility for modern workplace configurations.

## SHARED GREEN SPACE

Two Premier Class A+ buildings are seamlessly integrated by a meticulously designed collaborative outdoor courtyard with fresh-air workspace areas.

## STEPS AWAY

Within walking distance to restaurants, banks and other retail amenities with a Walk-Score of 96; "Walker's Paradise".

## ON-SITE CONCIERGE

Five-star service with an on-site Workplace Experience Coordinator.

## SUSTAINABLE

WELL Building Standard™, LEED® Gold Certified and Energy Star® Rated

## TENANT FOCUSED

Conference center, fitness center, bike room and more.

## ELEGANT ARCHITECTURE

Beaux-arts-inspired architecture with marble-clad lobbies and hand painted murals.



## BUILT FOR PERFORMANCE



Our focus on health, comfort, and high-performance building standards has earned us WELL Certification —**recognizing spaces designed to enhance wellbeing.**



And when you work at Pasadena Towers, you work at **the most efficient workplace in Pasadena.**

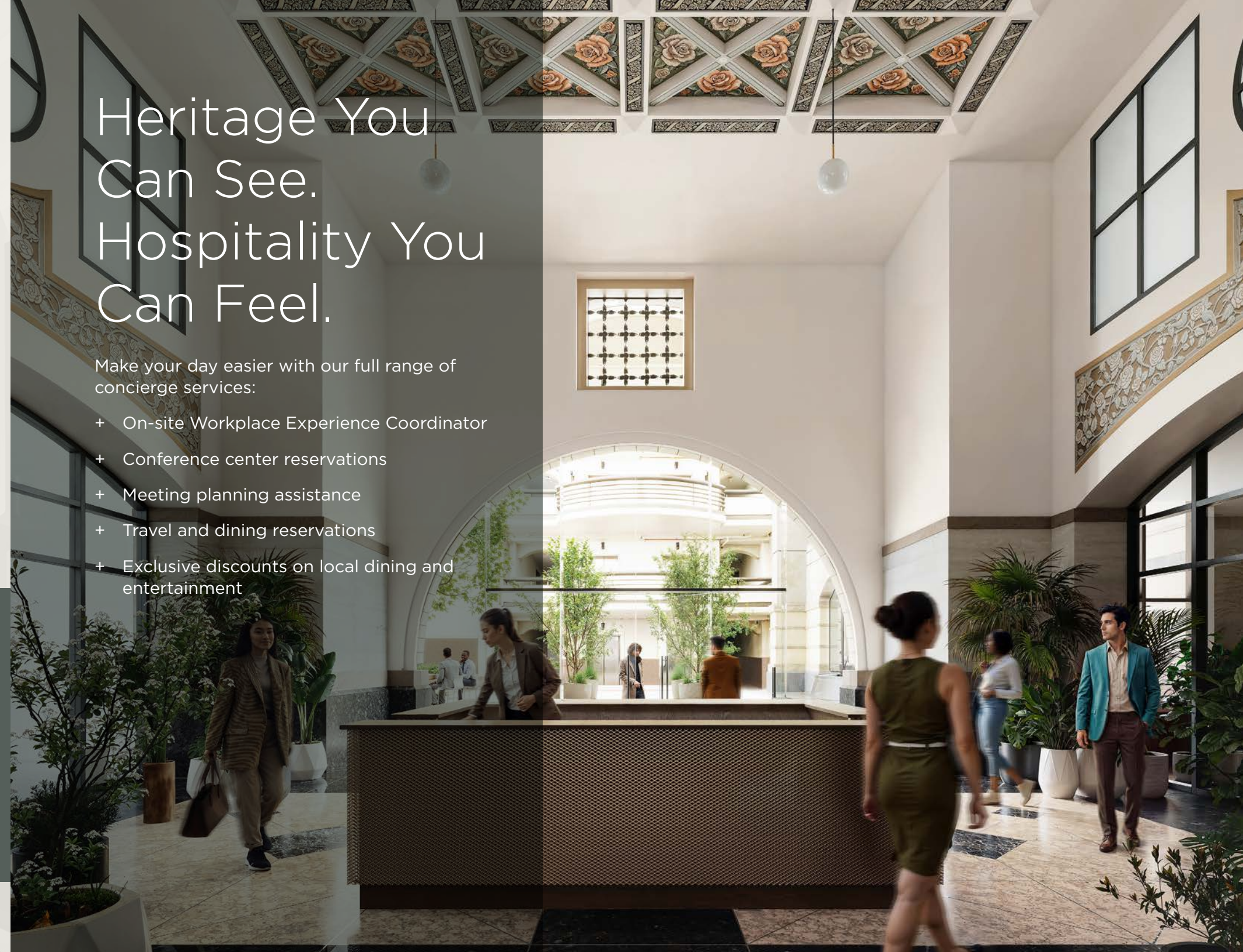


Our standout facilities and forward-thinking features have earned us **LEED® Gold certification**—the most elite national recognition for sustainability—as well as an **ENERGY STAR® rating of 95.**

# Heritage You Can See. Hospitality You Can Feel.

Make your day easier with our full range of concierge services:

- + On-site Workplace Experience Coordinator
- + Conference center reservations
- + Meeting planning assistance
- + Travel and dining reservations
- + Exclusive discounts on local dining and entertainment





## Built For Connection

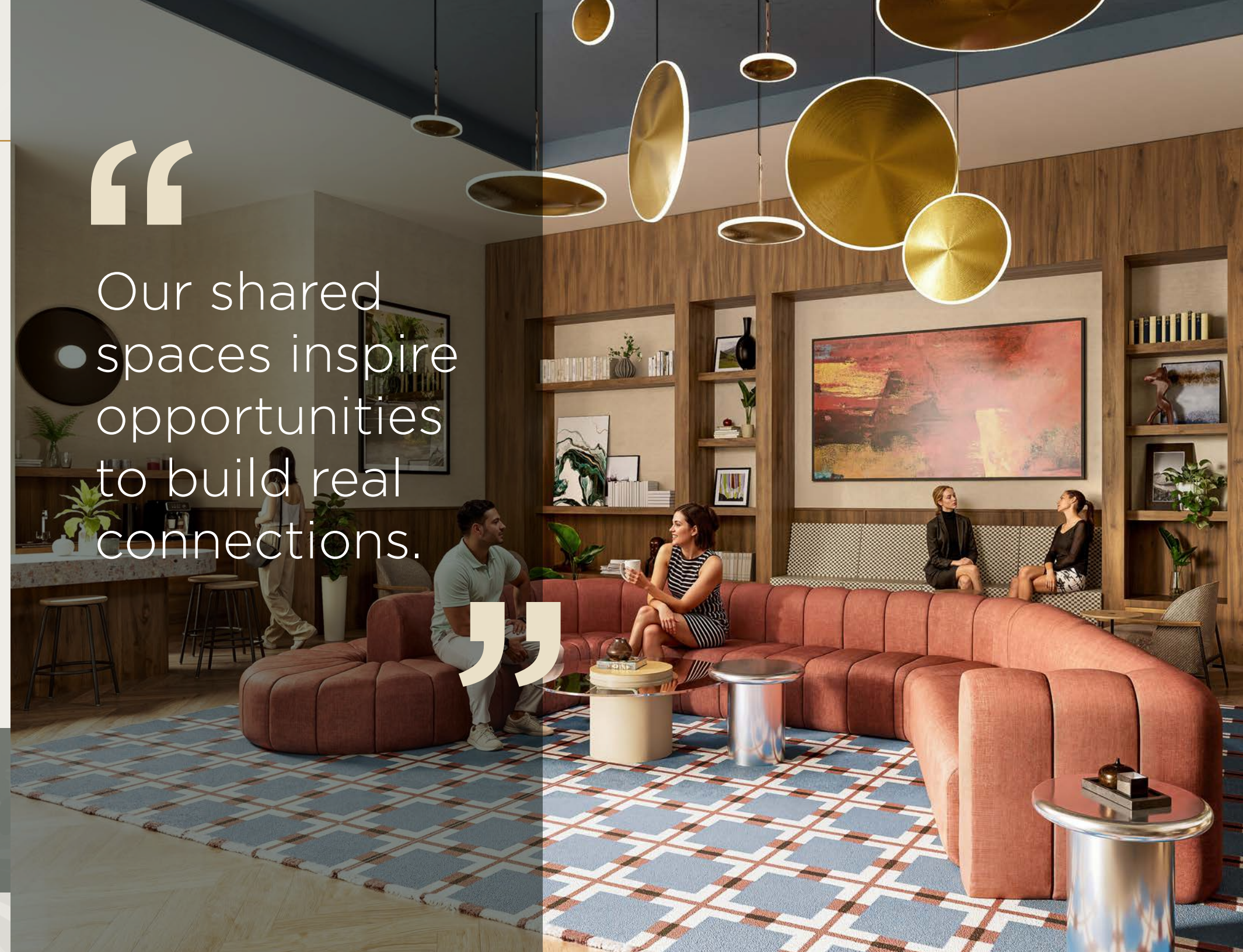
- + 3,000 sq. ft. fitness center
- + 2,000 sq. ft. adaptable conference center
- + Bike room and individual bike lockers
- + Wi-Fi enabled collaborative open-air courtyard
- + Sundry & deli shop, salon and car wash services

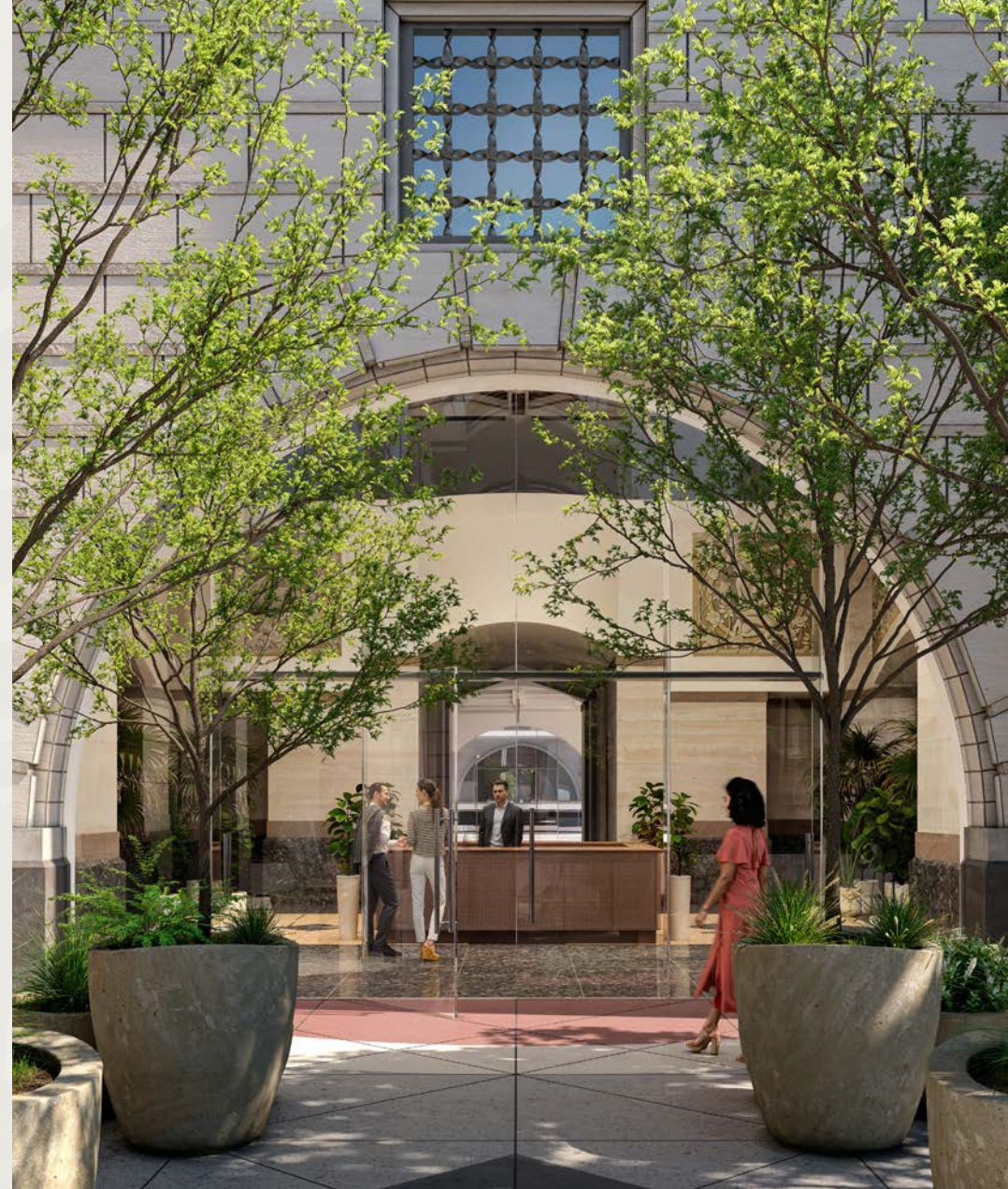
The Perch is a peaceful outdoor escape, great for gatherings, working outdoors, or unwinding.

“

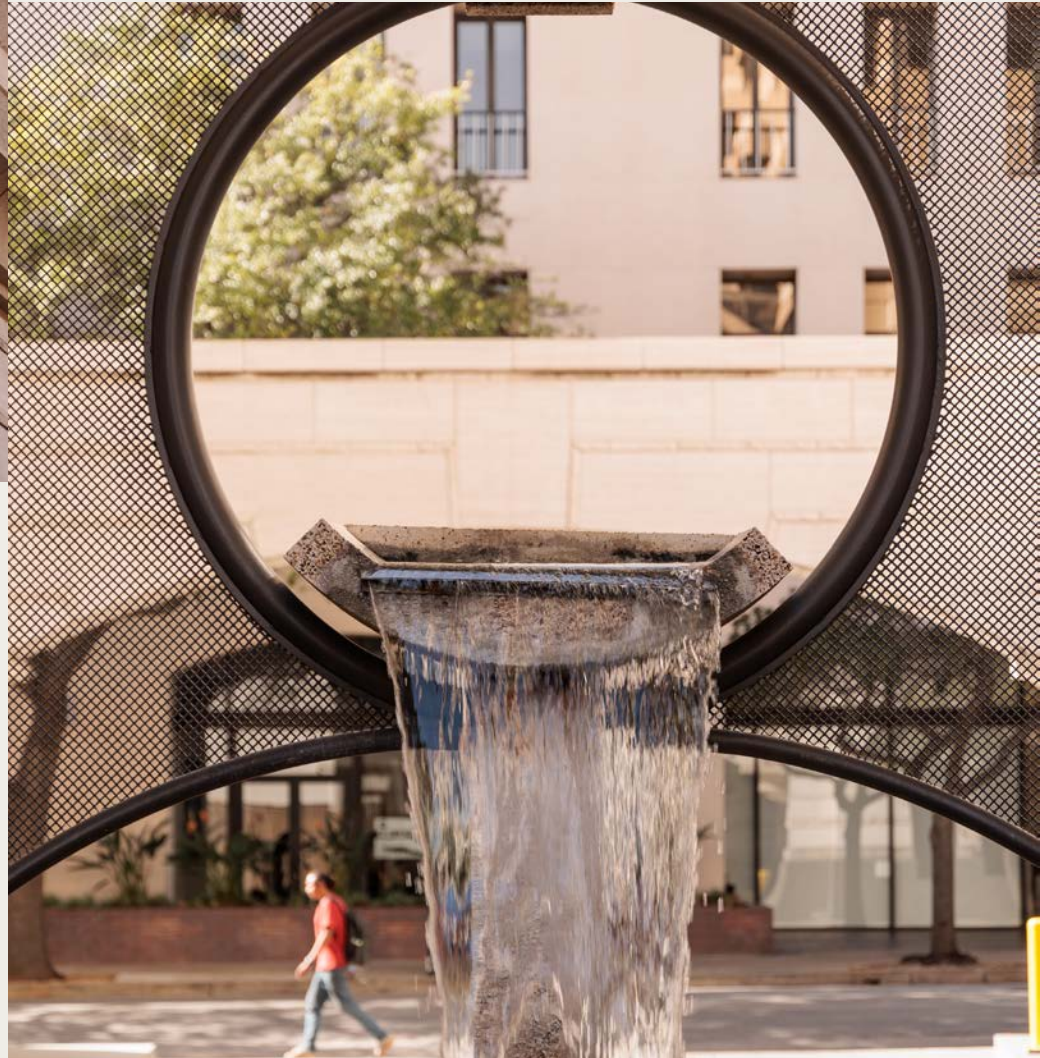
Our shared spaces inspire opportunities to build real connections.

”





**BELOW**  
Marble-clad lobbies with rose and citrus-themed murals by new York artist Richard Haas.



## Difference Making Details

Our Pasadena-inspired features and finishes pay homage to the most well-loved aspects of the city... with just the right amount of added flair.

**TOP**  
Beaux-Arts-inspired architecture with fountains, curved copper mansard roofs and landscaped plazas.

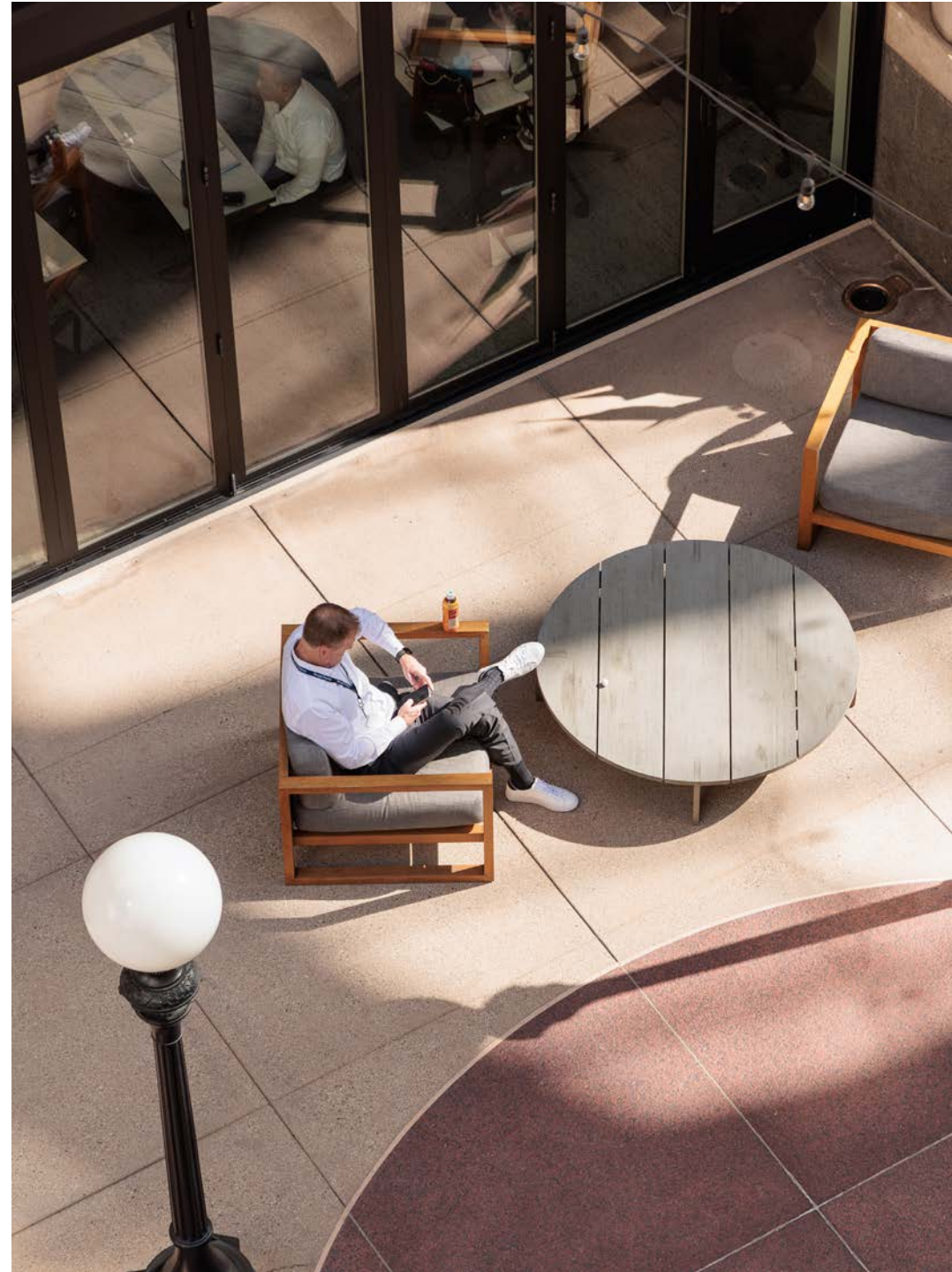


**BELOW**

Featuring the most distinguished on-site amenities in Pasadena including a speakeasy. (Coming Soon)



Inspired by the Past.  
Designed for Community.





The Perfect Setting for  
a Midday Recharge.

# Availabilities

## TOWER I

800 E COLORADO BLVD

Suite 240*	2,891 RSF
Suite 600**	26,754 RSF
Suite 700**	26,719 RSF
Suite 800**	11,264 RSF

\*Contiguous to 5,065 RSF  
\*\*Contiguous to 64,737 RSF

## TOWER II

55 S LAKE AVE

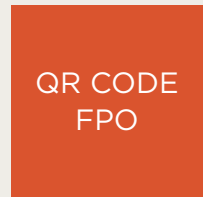
Suite 600**	7,668 RSF
Suite 625**	2,047 RSF
Suite 665**	7,144 RSF

\*\*Contiguous to 16,859 RSF

## TOWER II

825 E GREEN STREET

Suite 805	2,032 RSF
-----------	-----------



CLICK OR SCAN  
TO VIEW FLOOR PLANS



## Effortless Access

Situated on the prestigious corner of South Lake Ave and East Colorado Blvd, Pasadena Towers defines what it means to be main-and-main.

**We make it easy to get where you want to go—regardless of how you choose to get there.**

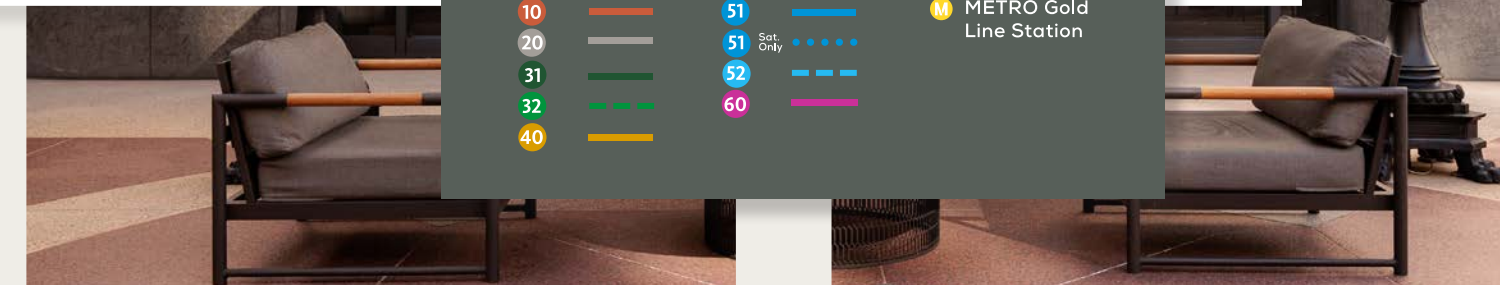
- + Quick and easy access to Foothill (210), Pasadena/Harbor (110) and Ventura (134) Freeways
- + Plentiful public transit options: including the Metro Gold Line nearby and multiple bus lines immediately accessible

96

Walk Score

87

Bike Score





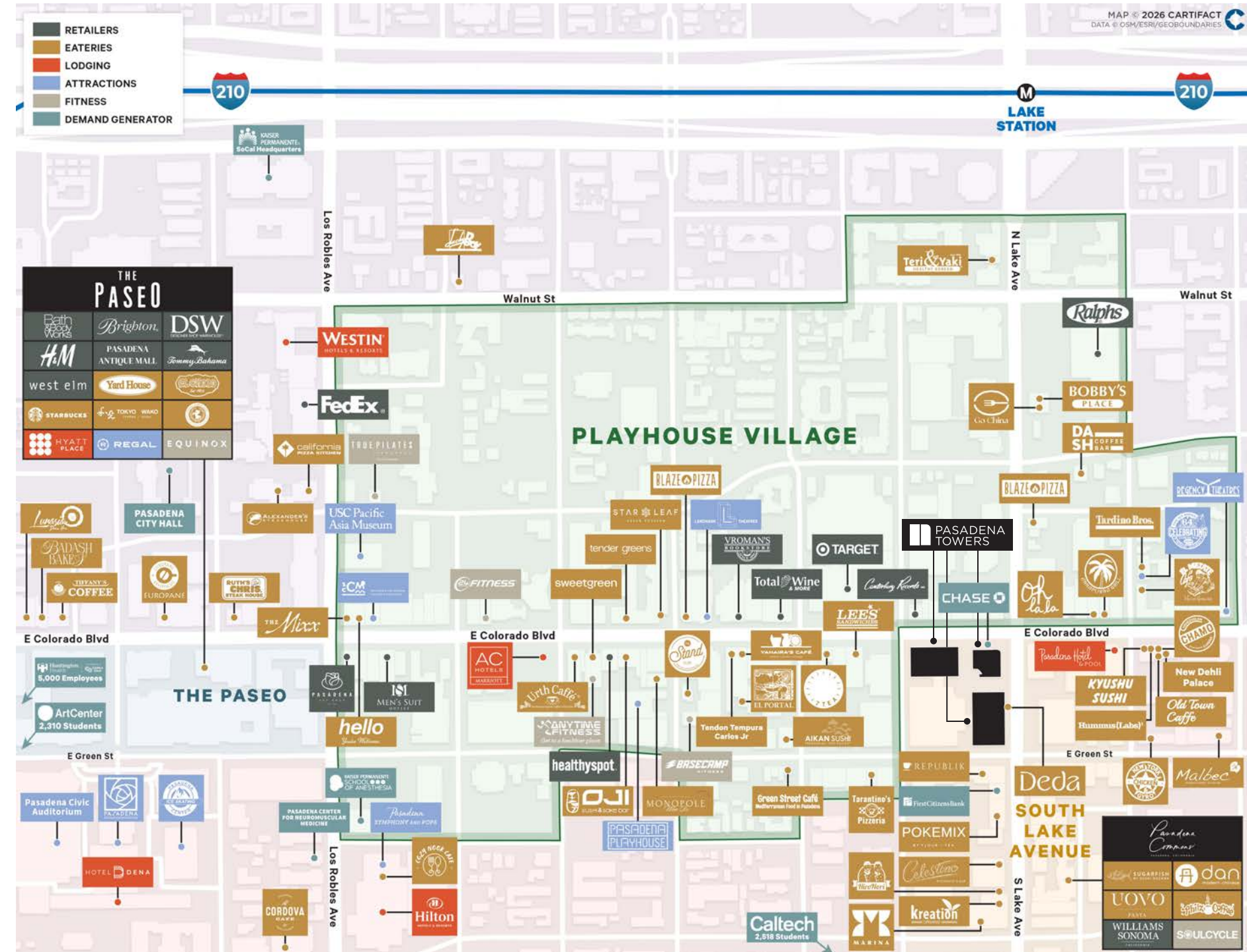
Steps from the Rose Parade, with exclusive VIP viewing each year for tenants.



# At the Center of It All

Positioned for ultimate accessibility, the property offers proximity to South Lake Avenue's dynamic retail and culinary offerings, complemented by readily available financial services, hotels, and more, all within a compact radius

- + Hundreds of retail, dining and hotel options within just a few miles
- + South Lake Avenue retail district just steps away
- + Paseo Colorado and Old Town Pasadena within a few minutes drive
- + Unobstructed views of downtown Pasadena and the San Gabriel Mountains
- + Weekly special events hosted by the South Lake Avenue Business District
- + Experience the authentic flavors of Georgia and Eastern Europe at Deda, Pasadena's newest culinary destination. Deda elevates the Pasadena Towers experience, offering a dining experience at its finest.



## OUR ANNUAL TENANT SURVEY

Every year Kingsley Associates is commissioned to administer a best-in-class office tenant questionnaire to gauge satisfaction. Results of the survey are used to improve performance, increase retention, maximize value and achieve operational excellence.

100%

Feel Valued as Tenants

96%

Would Recommend this Property to Others

100%

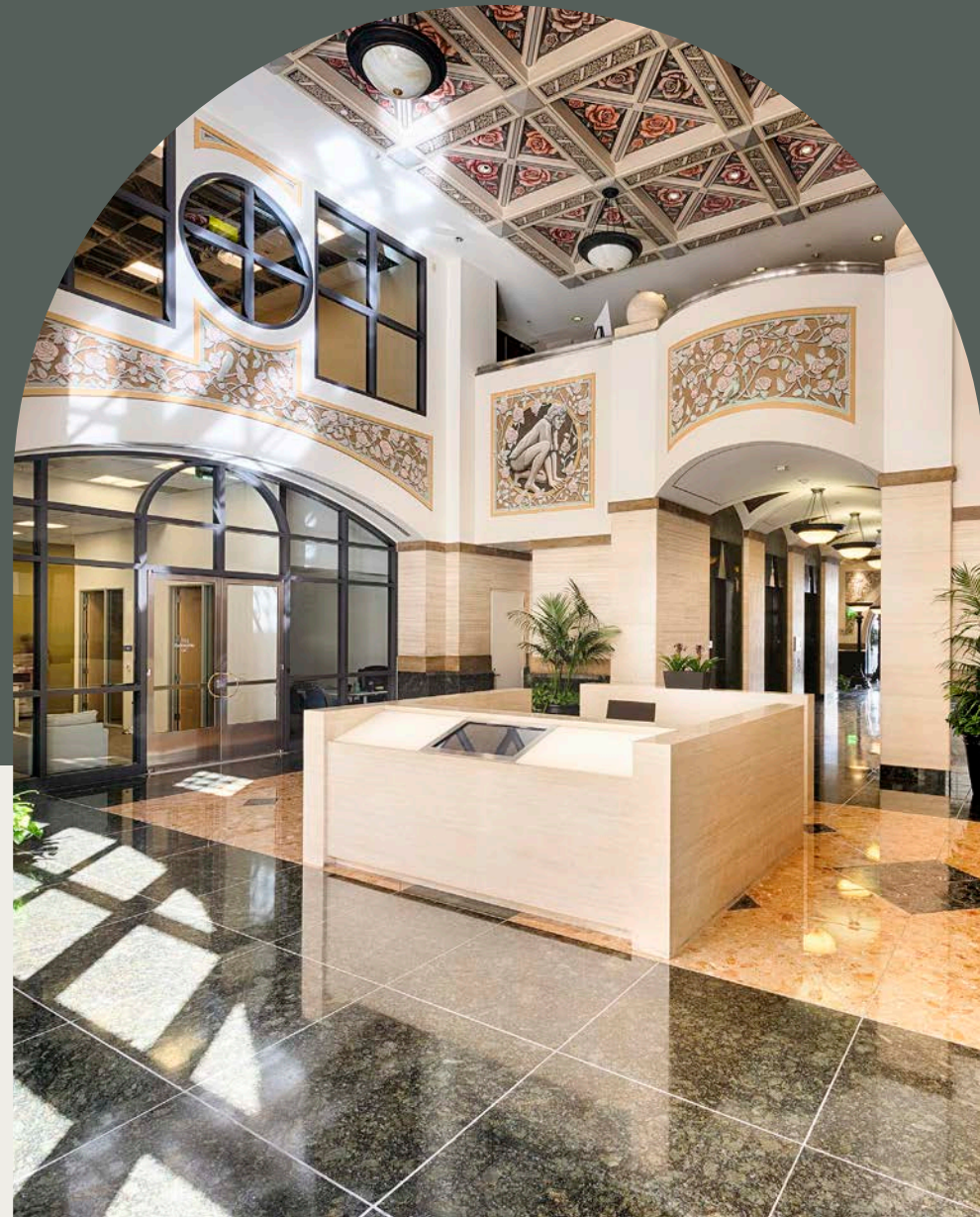
Are Satisfied with Management

96%

Are Satisfied with Maintenance Services

100%

Are Satisfied with The Leasing Process



## Built For Results

At Pasadena Towers, we offer a warm and welcoming environment that brings people together to create, connect and thrive in flexible spaces. We aspire to establish a community where tenants come first.

## Key Performance Indicators vs. The Kingsley Index



OVERALL SATISFACTION



MANAGEMENT - OVERALL SATISFACTION



LEASING PROCESS - OVERALL SATISFACTION



PROPERTY RECOMMENDATION



RENEWAL INTENTIONS

### COMMENTS FROM OUR COMMUNITY

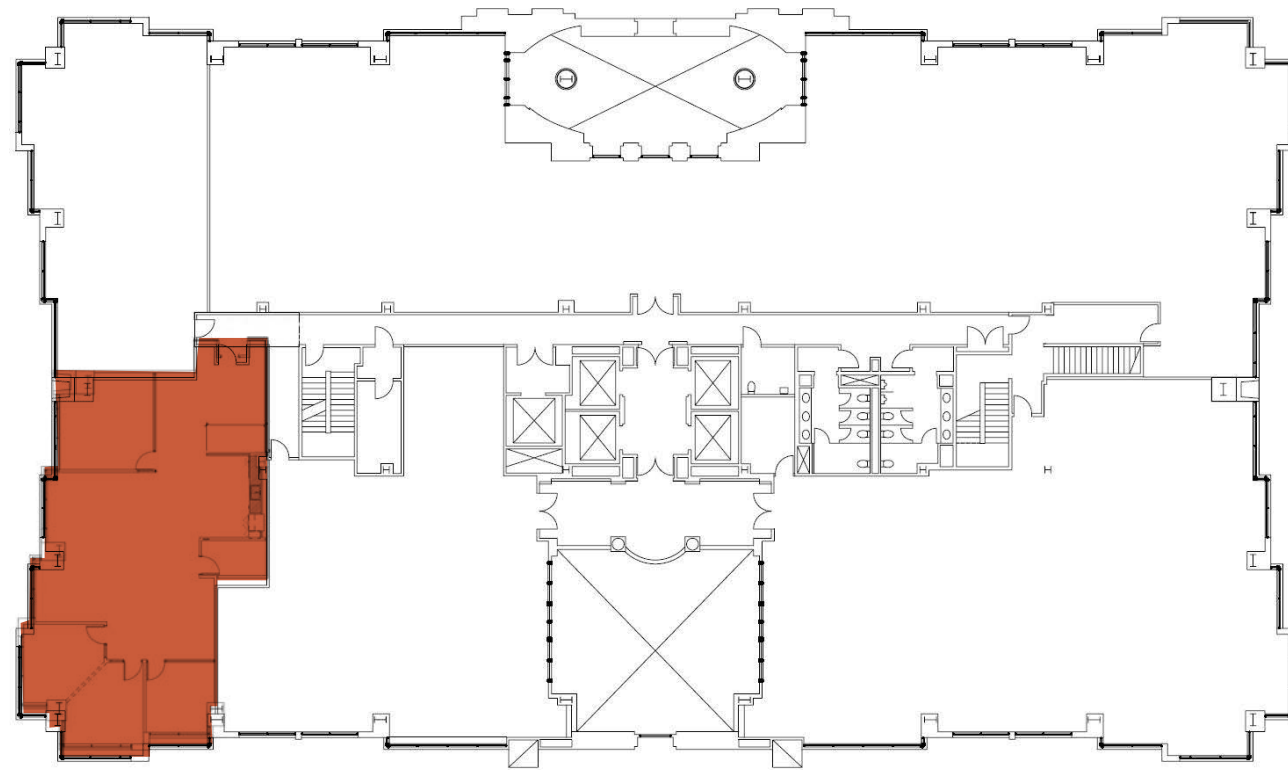
The Management Team at Pasadena Towers shows their appreciation of the tenants by giving back each month with special events, high class themed breakfasts and lunches, gift-giveaways, and quality newsletters that showcase the monthly activities. - Todd G., TM Claims Services Inc

The experience right away was great. Our employees really felt a high level of satisfaction with all the amenities we have here. It's a combination of the facility itself and the quality of the people who are here has made our experience a really great one. - Ray Vasquez, Bank of America

The property management team is great to work with, they are always quick to respond and willing to assist with any request we might have. The engineering team is also very responsive and knowledgeable with our maintenance needs. - Andres Palacios, Tokiom

# Tower I

800 E COLORADO BLVD



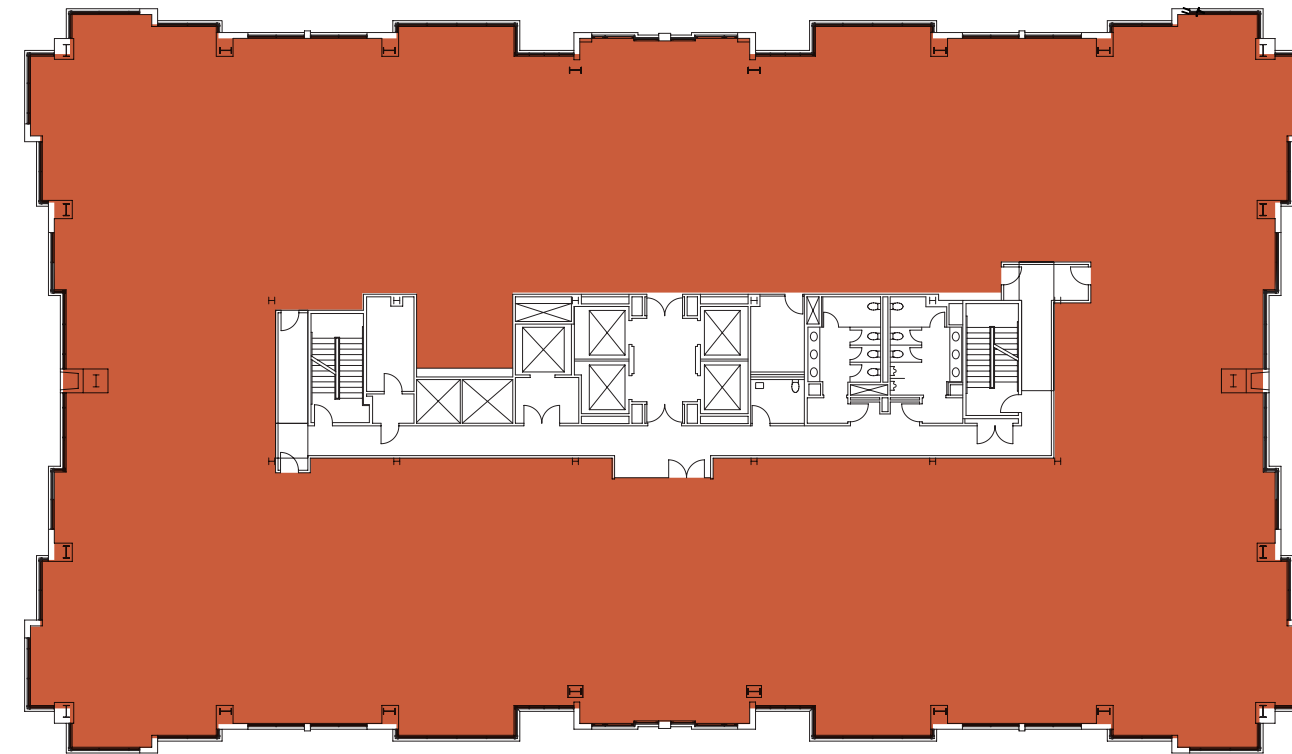
SUITE 240

2,891 RSF



# Tower I

800 E COLORADO BLVD



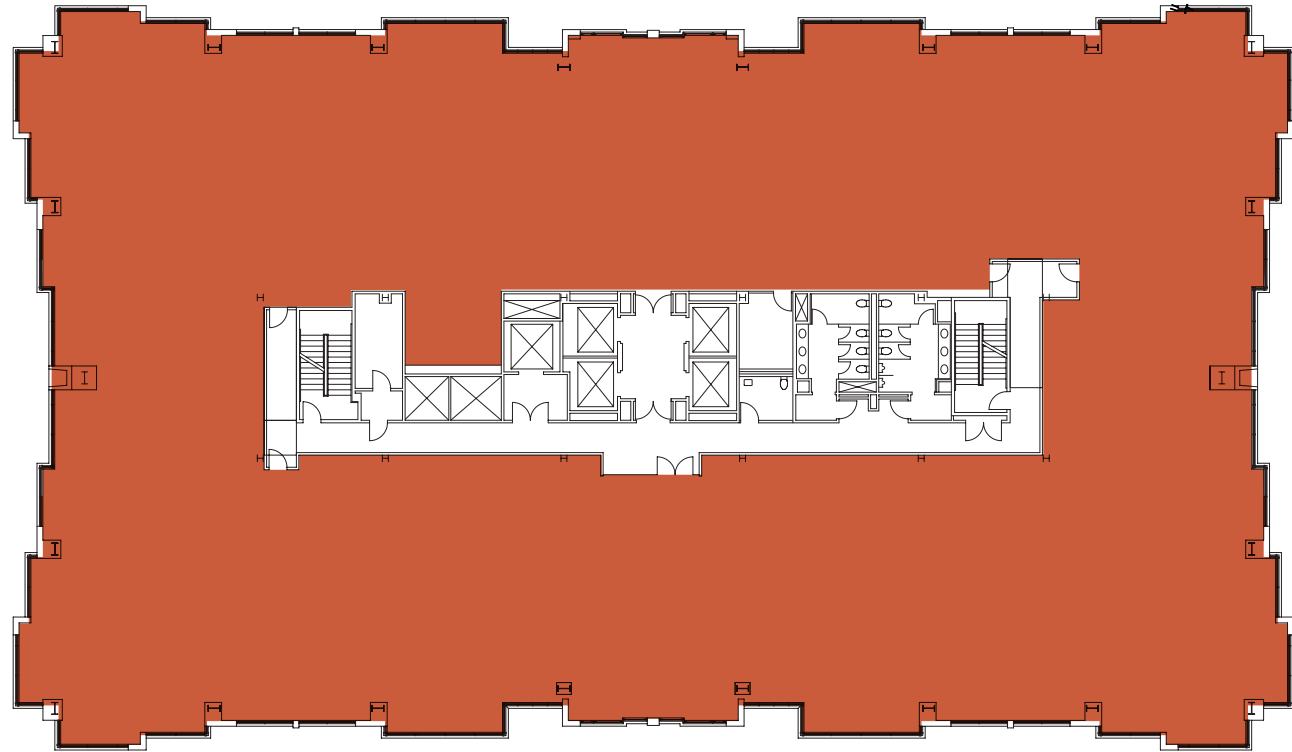
SUITE 600

26,754 RSF



# Tower I

800 E COLORADO BLVD



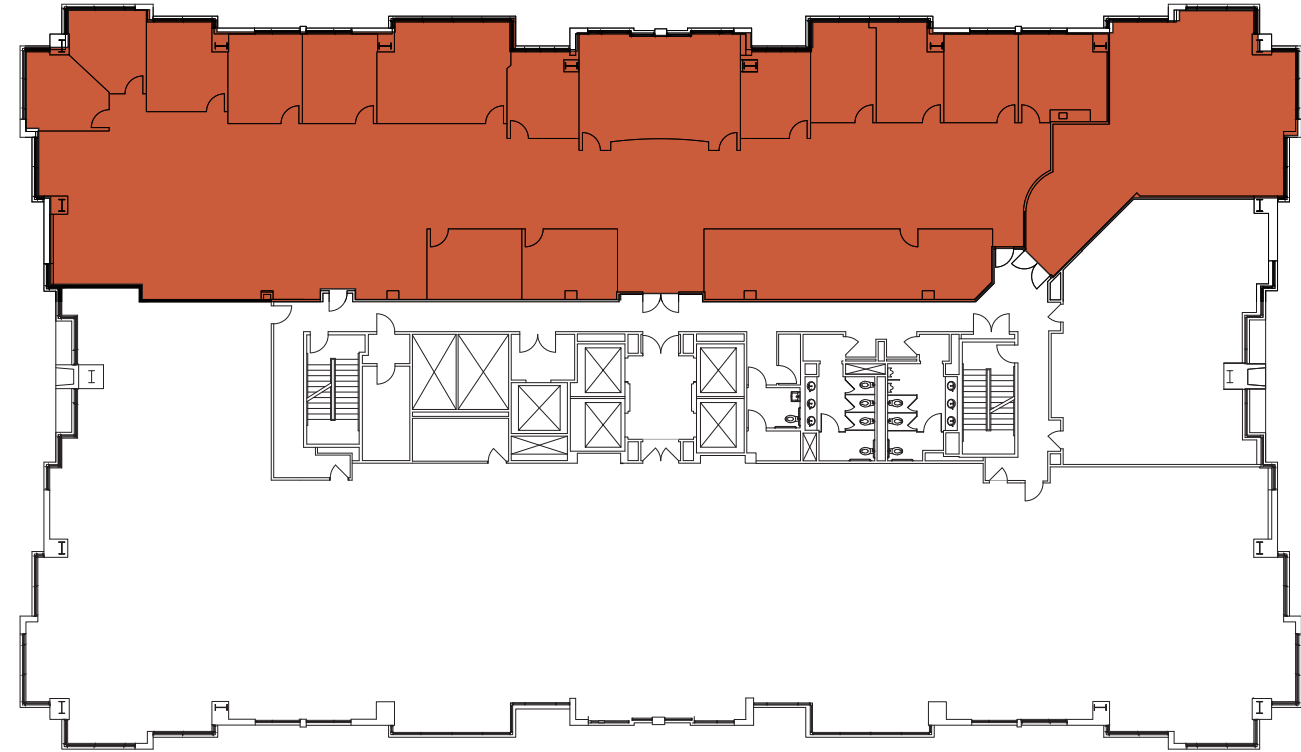
SUITE 700

26,719 RSF



# Tower I

800 E COLORADO BLVD



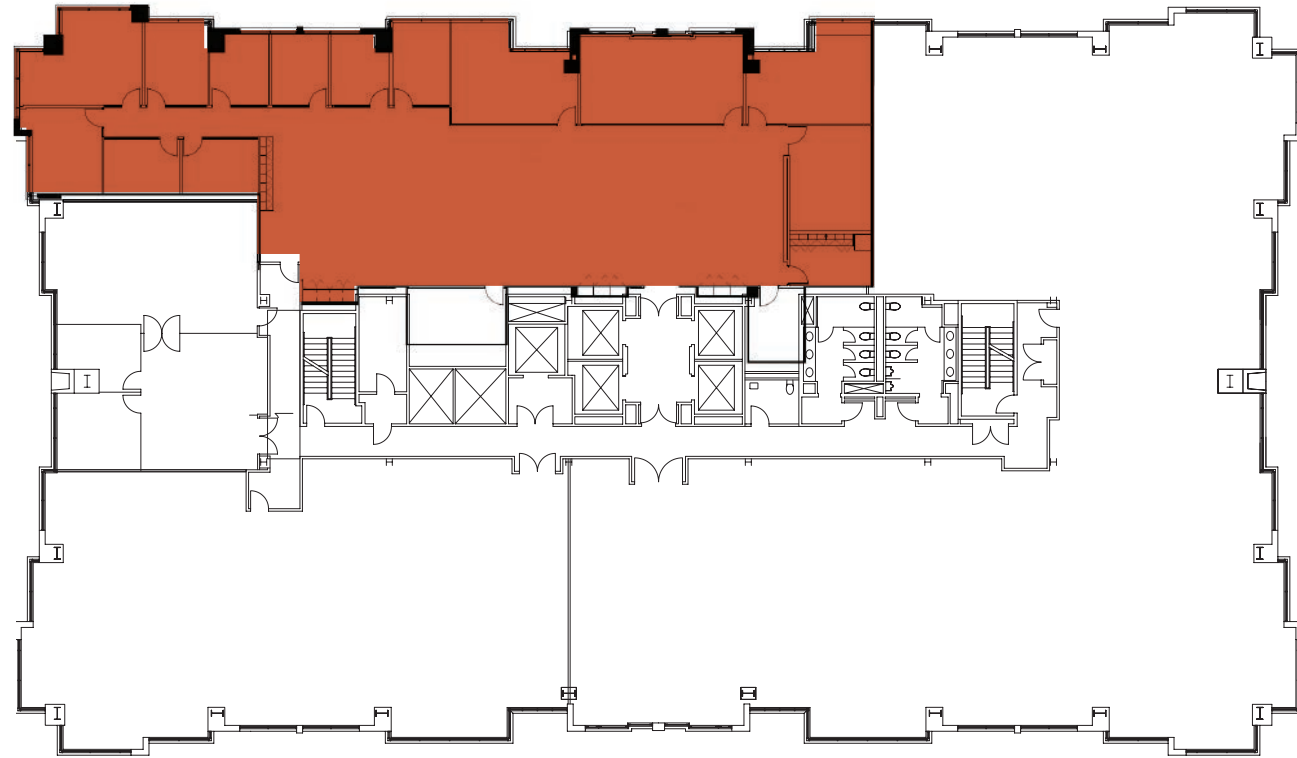
SUITE 800

11,264 RSF



# Tower II

55 S LAKE AVE



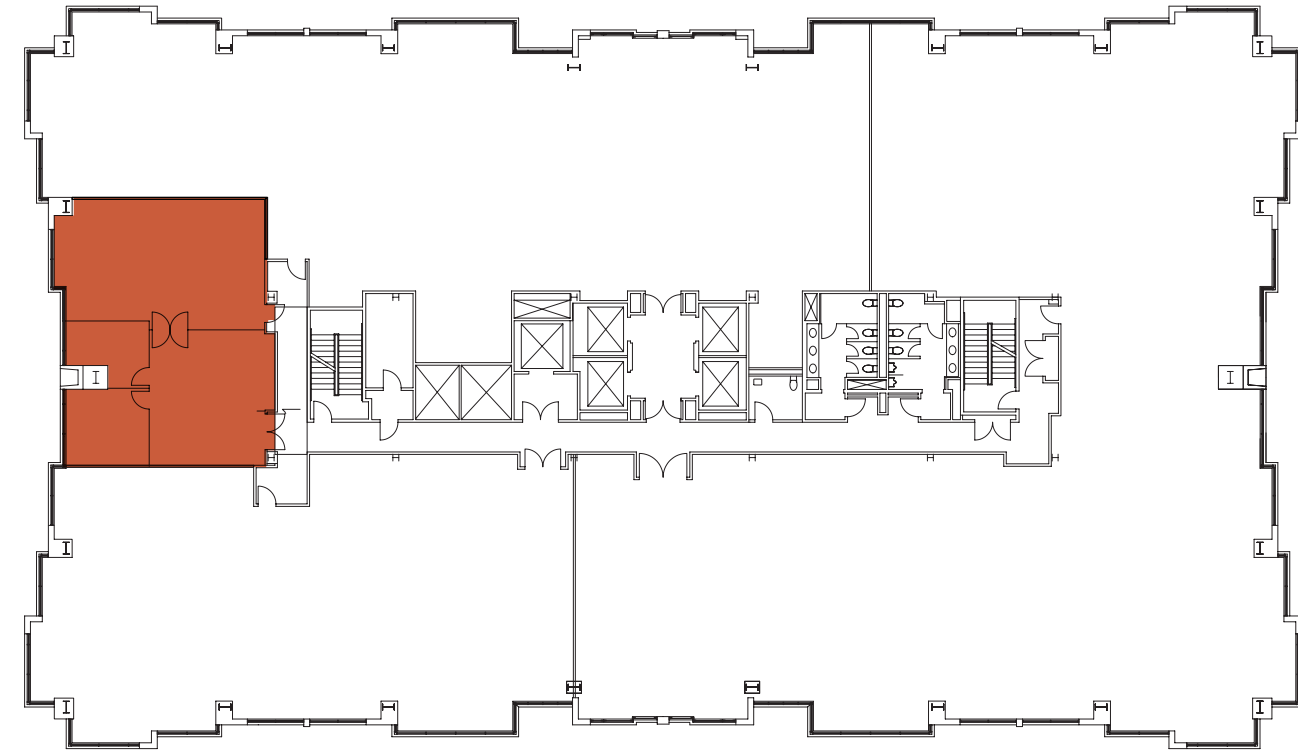
SUITE 600

7,668 RSF



# Tower II

55 S LAKE AVE



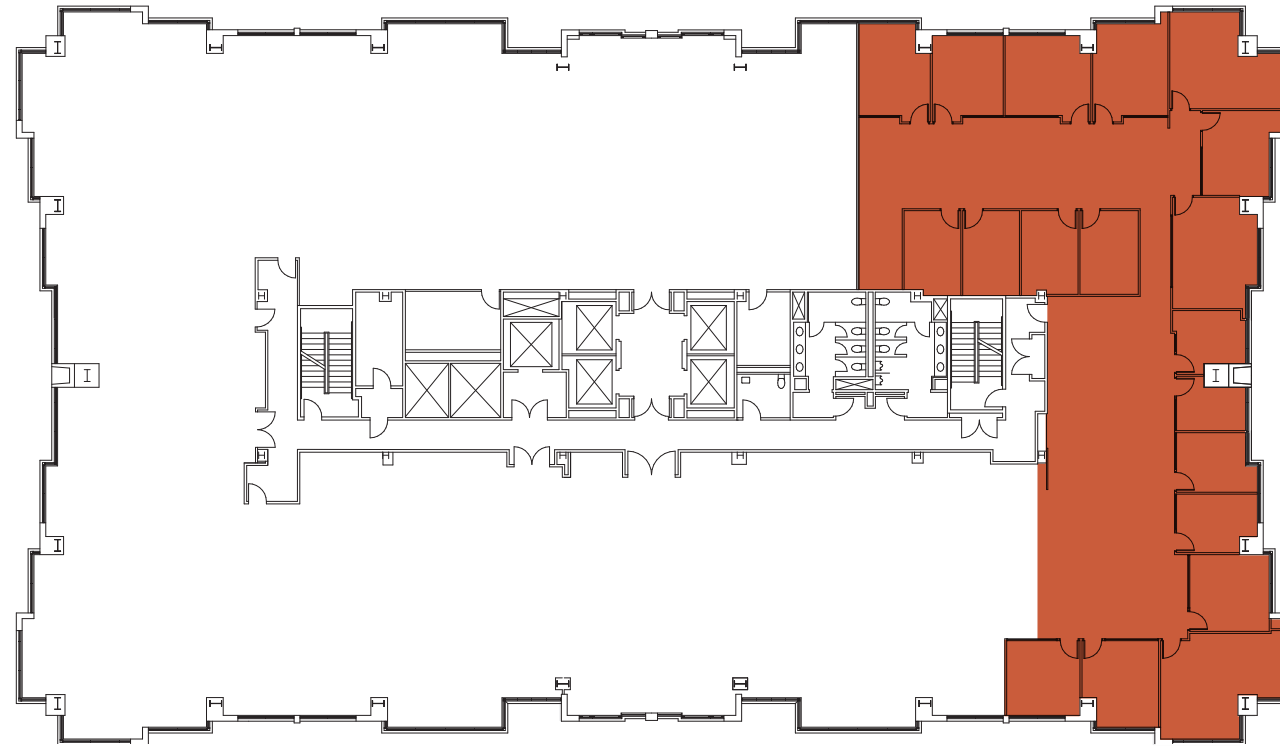
SUITE 625

2,047 RSF



# Tower II

55 S LAKE AVE

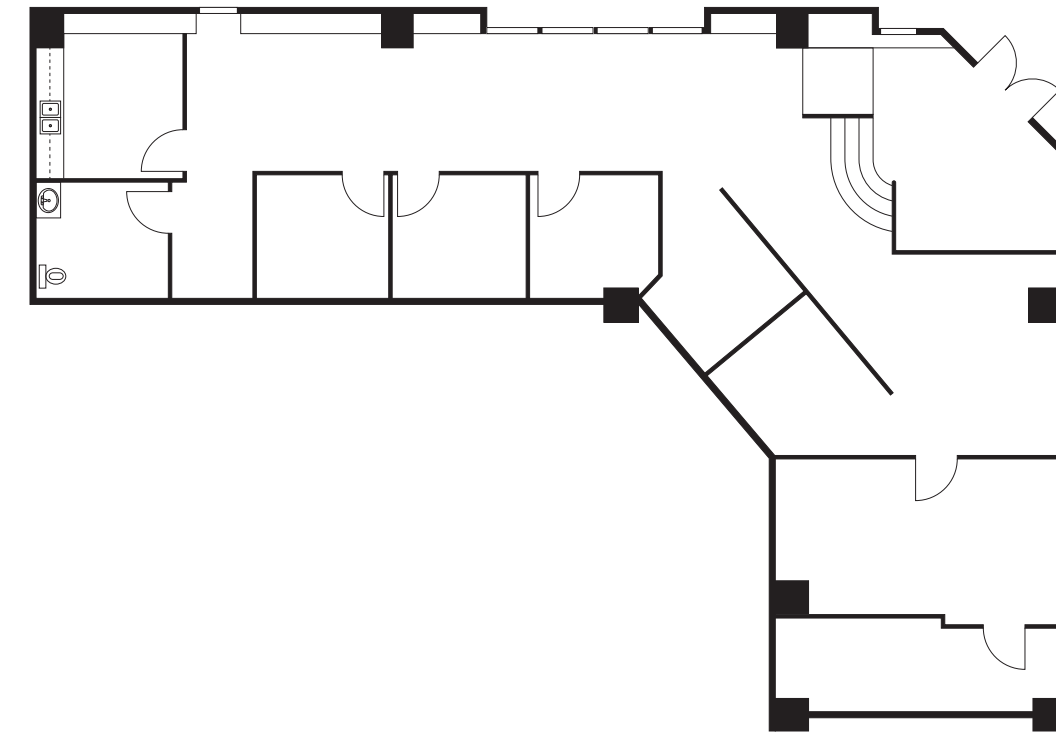


SUITE 665  
7,144 RSF



# Tower II

55 S LAKE AVE



SUITE 805  
2,032 RSF



# The Workday You've Been Waiting For.



## LEASING

**NATALIE BAZAREVITSCH**  
+1 818 502 6723  
natalie.bazarevitsch@cbre.com  
Lic. 01188604

**JULIANA SAMPSON**  
+1 818 502 6722  
juliana.sampson@cbre.com  
Lic. 01894878

**DOUG MARLOW**  
+1 818 502 6707  
doug.marlow@cbre.com  
Lic. 00950434

**SEAN O'MALLEY**  
+1 818 907 4699  
sean.omalley@cbre.com  
Lic. 02192775

**JACKIE BENAVIDEZ**  
+1 818 502 6758  
jackie.benavidez@cbre.com  
Lic. 01894070

## PROPERTY MANAGEMENT

**NATHAN SOVICH**  
Director  
+1 818 245 0202  
nathan.sovich@cbre.com  
Lic. 01922819

**RISA HONDA, RPA, FMA**  
Senior Real Estate Manager  
+1 626 793 8817  
risa.honda5@cbre.com  
Lic. 01329667

800 E Colorado Blvd | 55 S Lake Ave | Pasadena, CA 91101



**CBRE**